

# NIRS

# **\_\_\_Textile development and production for the highest quality standards**

With a background in fine art, psychoacoustics, design and software programming, and with deep knowledge of the complexity of artistic, architectural and acoustic requirements, New Rug Studio focuses on the development and production of exclusive handmade rugs and room concepts. All stages of production, from conception to installation of a wall hanging or floor covering in any size, color, and shape can be realized. Our carpets can therefore be found where the highest quality and durability are required: Art Exhibitions, Commercial, Hotels, Yachts, Event, Aircraft and Automotive. New Rug Studio produces exclusively using tools made in Germany and works with local spinning mills in a sustainable and ethical way. This ensures the highest quality and often a lifelong durability.

# 1\_\_Branding Hub-Garden



## Berlin 2022 Chilenian River Delta

In cooperation with Weberei Berlin, NRS created a concept for a 35-square-meter wall hanging for a room installation in the offices of an international media corporation. Considering the acoustic

properties of the room, a sound treatment was planned into the profile of the carpet. The depicted sample uses 24 hand-dyed colors and has an 18 mm high pile made of German sheep's wool.

# 2\_\_ Existing Otherwise



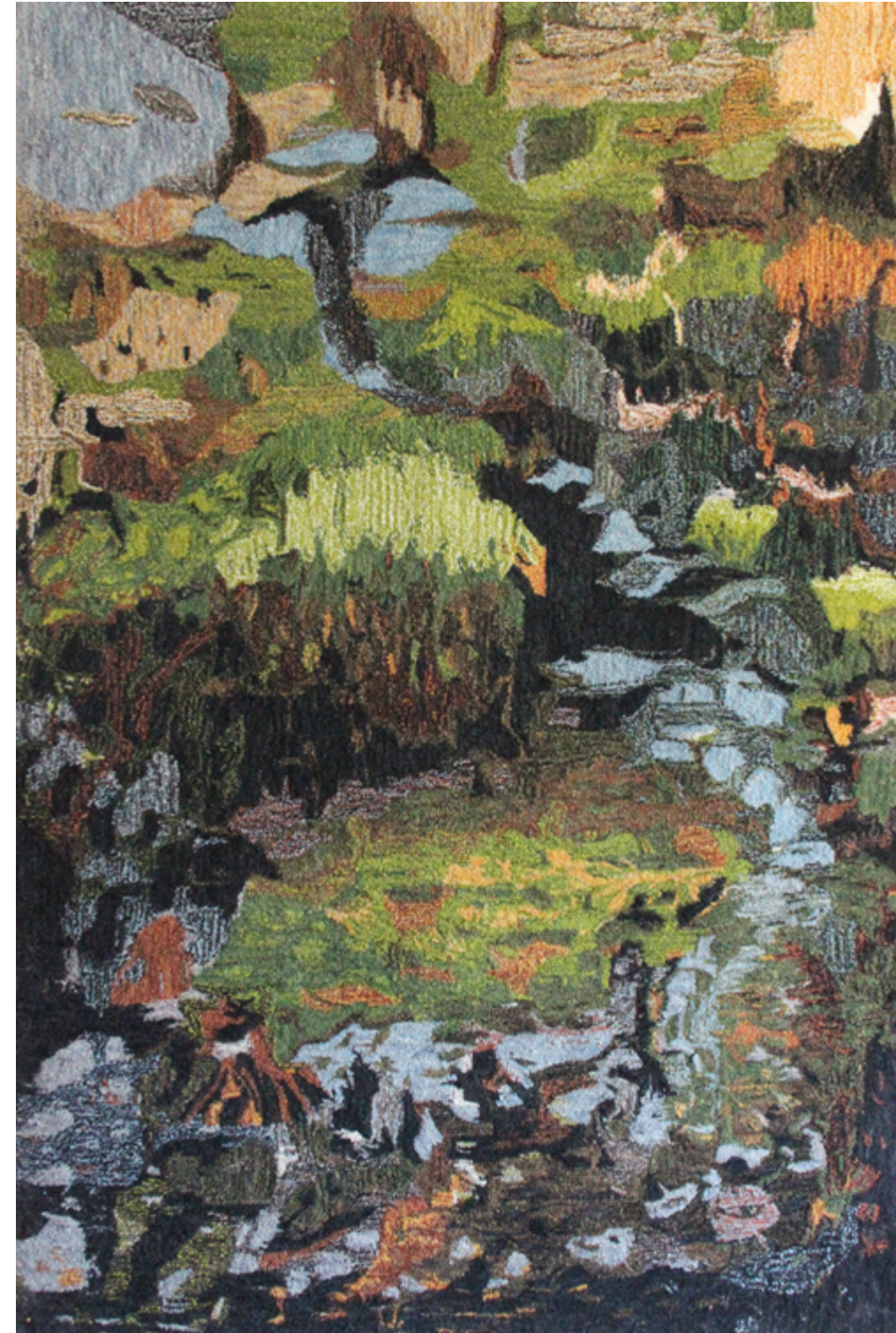
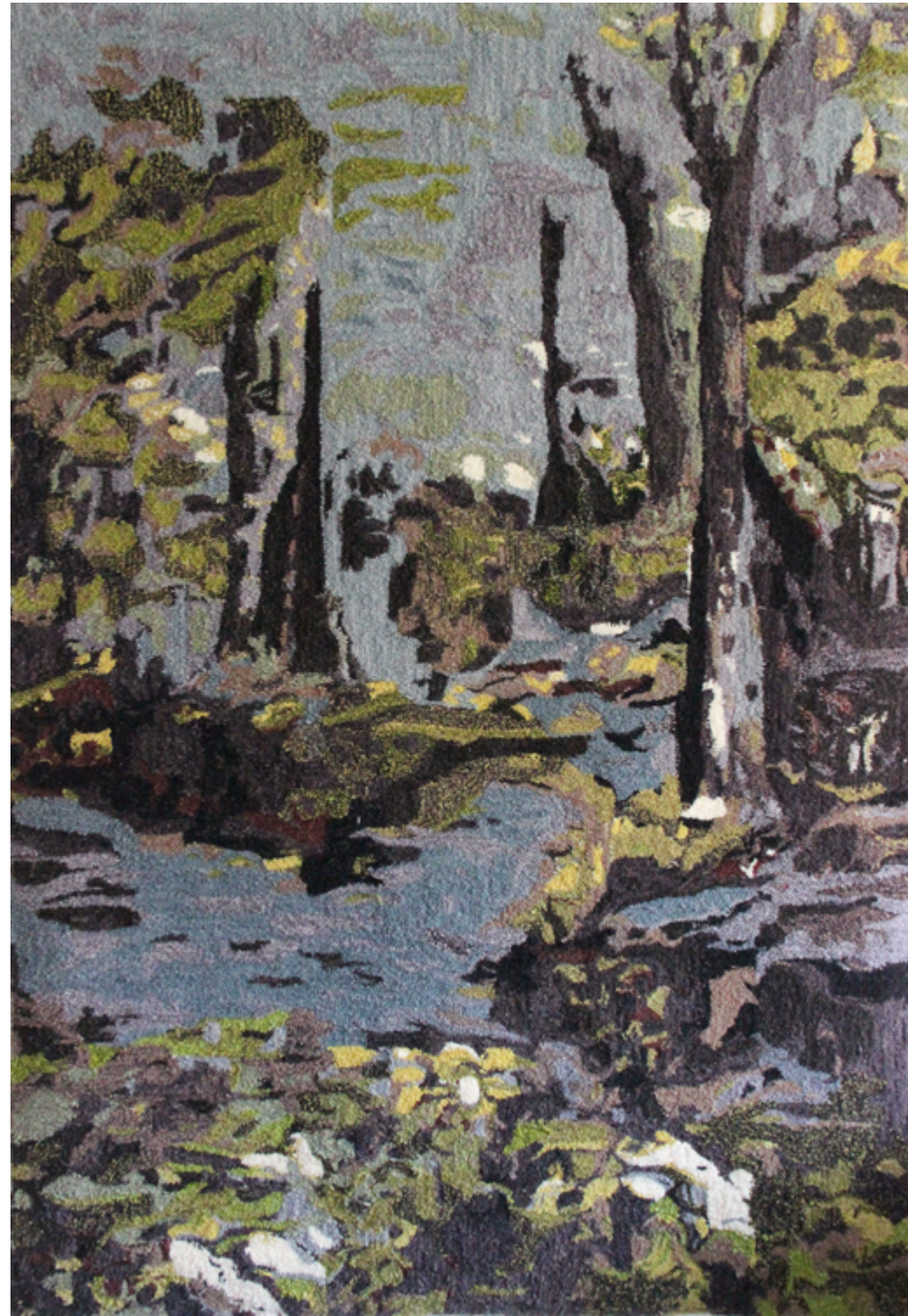
**Bozen 2022**  
**Existing Otherwise**  
**- Inner Jungle**  
**by Irene Fernández Arcas**

From the series Existing Otherwise – Inner Jungle by Irene Fernández Arcas, a textile drawing and a watercolor graphic were used to create two rugs, each 180 × 200 cm, as a wall hanging and floor covering. The works are exhibited at the Parkhotel Mondschein in Bolzano, Italy.



Bozen 2022  
Existing Otherwise  
– Inner Jungle  
by Irene Fernández Arcas

### 3\_\_ Swamp 1, 2



**Berlin 2022–23**  
**Swamp 1,2**

Swamp is a series of landscape impressions and patterns with a pile height of 16 mm and 16-times hand-dyed yarn in the size 140 × 200cm. By mixing these basic tones, a whole range of intermediate tones were created.

# 4\_\_ Clouds



**Athens 2022  
Housing Project**

For a city villa in Athens, a 300 × 200 cm area rug with a 16 mm pile height was created. The color palette consists of 28 hand-dyed shades. The motif was roughly pre-drawn and refined in the tufting process.

# 5\_\_ Tarot



Berlin 2022  
Tarot

Tarot motif in two different finishes: two-color, linen yarn natural, loop pile, and 7 hand-dyed wool yarns with 18 mm pile height. Made for Weberei Berlin.



# 6\_\_ Windgenerator



**Berlin 2022**  
**Windgenerator**

Burning wind generator on turquoise background. 14-ply hand dyed German yarn, 18 mm pile height. To ensure a sufficient level of detail, some knots were set by hand.

# 7\_\_ Love Rug



Berlin 2022  
Paul Waak

140 x 220 cm, hand dyed,  
18 mm cut pile.

# 8\_\_ Open Mind



Berlin 2023  
Santiago McAuliffe

Set of 5, 50 x 50 cm, hand dyed,  
15 mm cut pile

# The Process

### Hand Dyed Yarn

In order to meet the requirements of a vivid transformation into a carpet, we hand-dye tested high-performance yarns spun in Germany. From the four basic colors cyan, magenta, yellow and charcoal, the desired colors are usually created in several dyeing processes. The selection is then mastered and refined using several light sources.

### The Tufting Process

A hand tufting gun uses air pressure to shoot yarn through a hollow needle into the openings of the backing fabric and then cuts the loop created by the needle guided by hand movement into the next opening. In a loop pile, the loop is not cut but the yarn is transported into the next opening, creating a knottier surface than in a smooth cut pile. The height of the resulting carpet pile is variable.

### The Finish

When the motif is finished and the entire canvas is tightly knotted, the loops are additionally fixed by a layer of latex. Then, the carpet is given stability by applying a second backing of cloth. After the carpet has been removed from the frame, its facing side can be processed. Depending on the desired result, the pile can be sheared by machine or by hand. Relief details can be worked out by carving with smaller shears or scissors. Finally, the edges are seamed and straightened.



# NRS

Benedikt Heigle  
newrugstudio.com  
info@newrugstudio.com